

Model: RS-RST009

RFID Cable Tie Tag Spec.



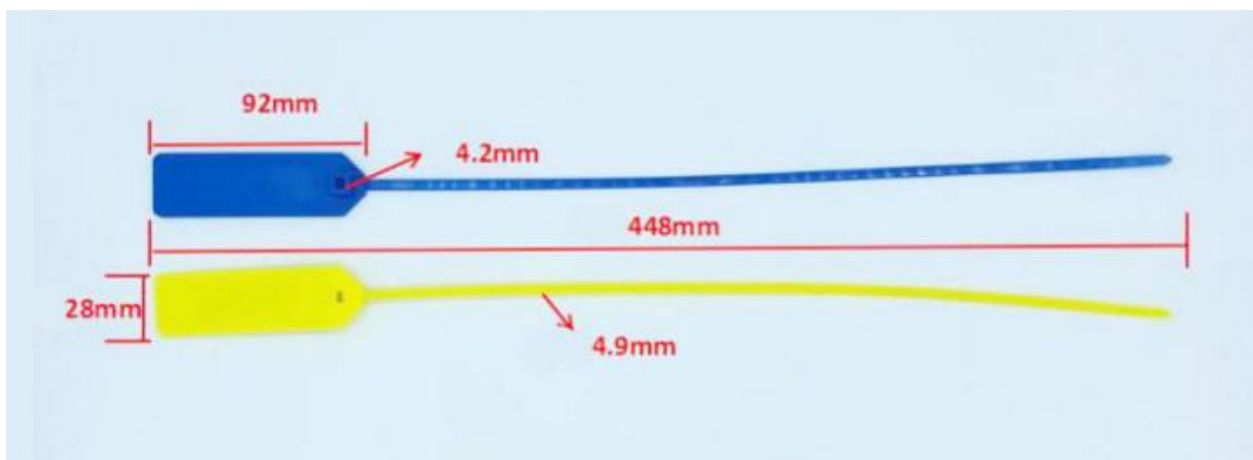
- **Material:** ABS
- **Frequency:** UHF 860-960MHz, HF 13.56MHz
- **Size:** 448x92x28mm or customized
- **Protocol:** ISO18000-6C/ISO14443A/ISO15963
- **Read Range:** HF 2-10cm, UHF 1-5M approx.
- **Operating mode:** Passive
- **Operating temperature:** -25° C to 65° C
- **Working Life:** Data stored for 10 years, can be read 100,000+ times
- **Application:** Gas cylinder tracking/Asset management/Baggage tagging, etc.

PRODUCT INTRODUCTION

RFID cable tie tags are usually used for indoor and outdoor application, which can be encapsulated with LF, HF or UHF antenna. You can choose a suitable frequency to build an automatic tracking system for your project. RFID cable tie tags are based on standard RFID technology and can be encapsulated with LF 125KHz, HF 13.56MHz or UHF 860-960MHz antenna.

- **Durable, highly visible, waterproof. Anti-corrosion, tamper proof.**
- **Faster data collection.**
- **One-time use.**
- **Easy to fasten.**
- **With UID number.**

PRODUCT VIEW



CONTACT

Ms. Edith Chen

P/W: +86 13612933572

Email: info@rfid silicone.com

Skype: live:cxjrfid

ADD: 11F, Datang Era Bldg, Meilong Blvd, Qinghu,
Longhua New District, Shenzhen City, Guangdong
518109 China.

APPLICATIONS

Widely used in resource management, electrical inspection, inventory, distribution and rental services as well as for easy management of maintenance and repair routines, etc. It effectively securing, serialization, tracking & identification of products.



Anti-tamper



Luggage Management



Waste Bin Management



Gas Cylinder Tracking



Logistics Management



Cable Management

MATERIAL OPTIONS

Custom RFID cable tie tags made of different material, could offer more choice suitable for your project, such as silicone cable tie tags, ABS cable tie tags, PP cable tie tags, etc.



RFID silicone tie tags



RFID ABS cable tie tag



RFID PP tie tag

CONTACT

Ms. Edith Chen

P/W: +86 13612933572

Email: info@rfidsilicone.com

Skype: live:cxjrfid

ADD: 11F, Datang Era Bldg, Meilong Blvd, Qinghu,
Longhua New District, Shenzhen City, Guangdong
518109 China.